
	MACOS Printer Install Guide				
TITLE	MACOS Printer Install Guide	Rev 1,0,0,2	Date	2023-07-01	
MODEL	Nuvia	Department	SW Team	Author	SJ, Park

MACOS Printer Install Guide



	MACOS Printer Install Guide			
TITLE	MACOS Printer Install Guide	Rev 1,0,0,2	Date	2023-07-01
MODEL	Nuvia	Department	SW Team	Author SJ, Park

Revision History			
Date	Revision	Description	Author
2022-11-08	Rev 1,0,0,1	Initial version.	Im

POINTMAN	MACOS Printer Install Guide				
TITLE	MACOS Printer Install Guide	Rev 1,0,0,2	Date	2023-07-01	
MODEL	Nuvia	Department	SW Team	Author	SJ, Park

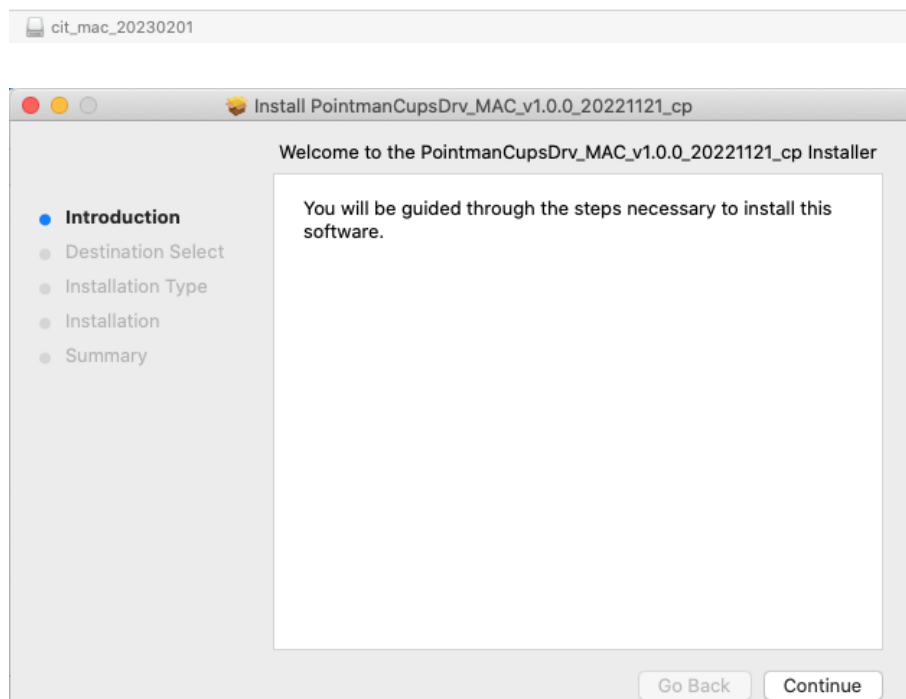
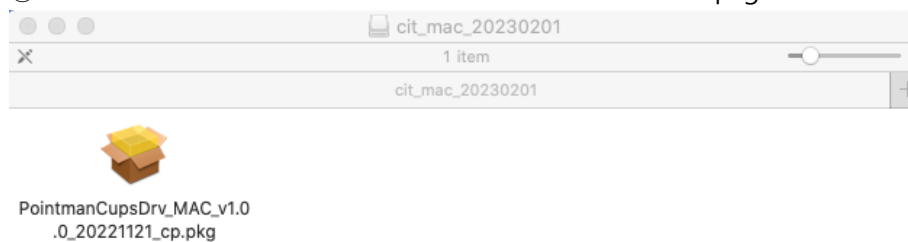
[Contents]

1.	How to install the MAC Printer Driver.....	4
2.	Select the Nuvia printer driver for printing.....	6
3.	How to print the image by options.....	10
4.	How the set the preset for the priter.....	13
5.	Config the printer options and download the firmware.....	13

POINTMAN	MACOS Printer Install Guide				
TITLE	MACOS Printer Install Guide	Rev 1,0,0,2	Date	2023-07-01	
MODEL	Nuvia	Department	SW Team	Author	SJ, Park

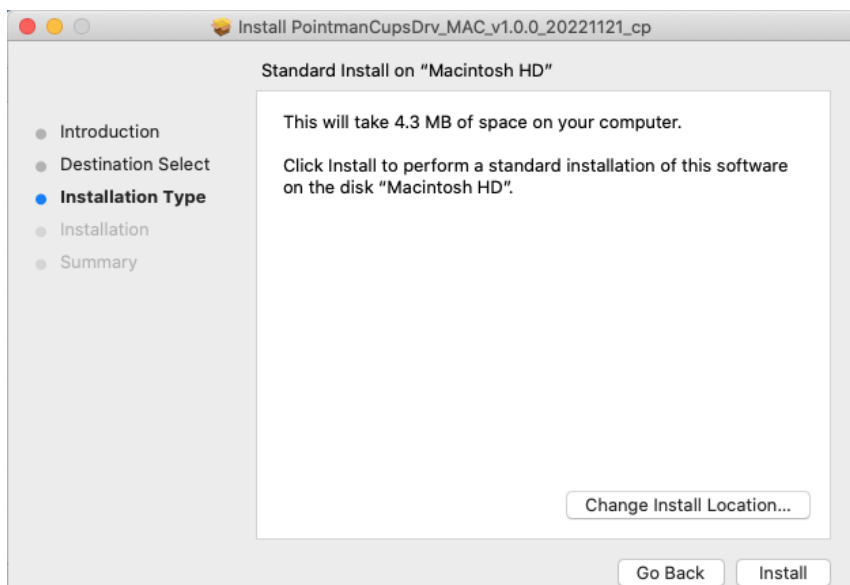
1. How to install the MAC Printer Driver

- ① Execute the DMG or PKG and install the Printer Driver pkg.

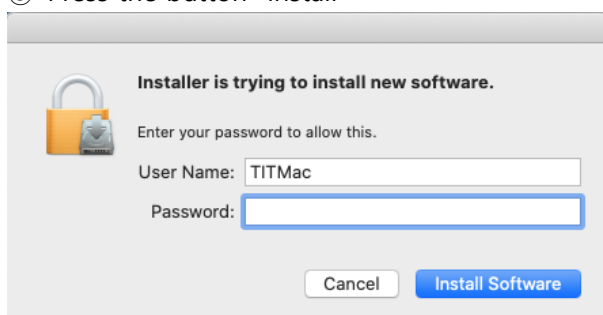


- ② Press the button "Continue".

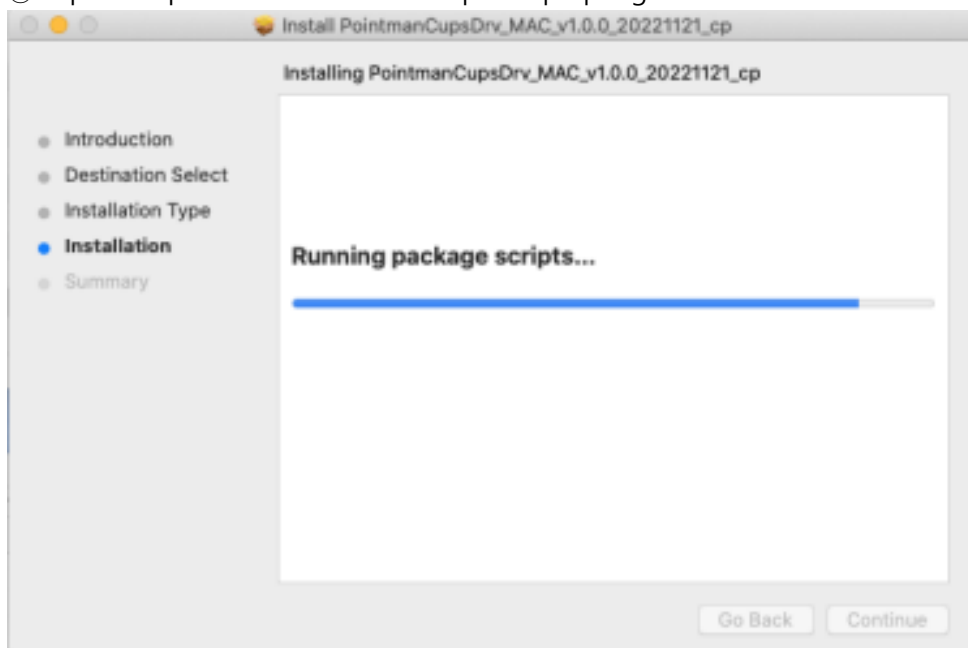
POINTMAN	MACOS Printer Install Guide				
TITLE	MACOS Printer Install Guide	Rev 1,0,0,2	Date	2023-07-01	
MODEL	Nuvia	Department	SW Team	Author	SJ, Park



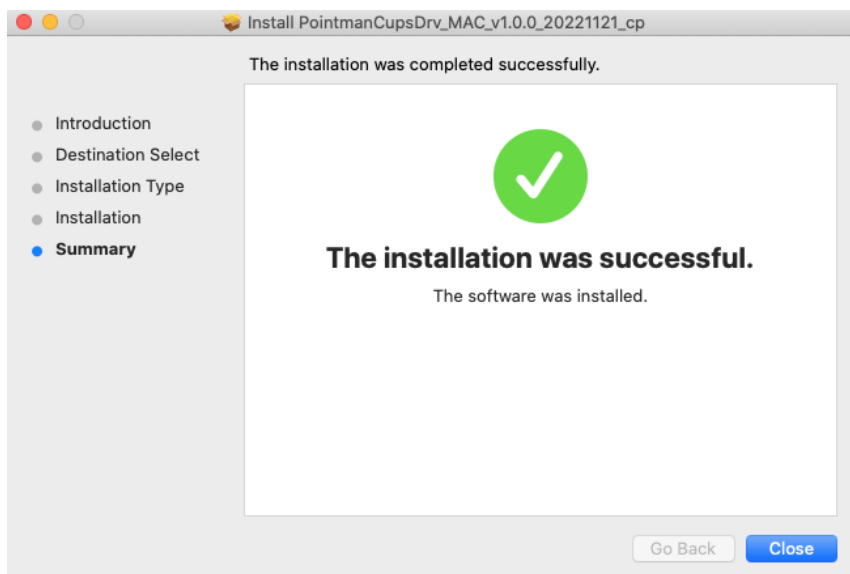
③ Press the button "Install"



④ Input the password for the desktop or laptop login ID.



POINTMAN	MACOS Printer Install Guide				
TITLE	MACOS Printer Install Guide	Rev 1,0,0,2	Date	2023-07-01	
MODEL	Nuvia	Department	SW Team	Author	SJ, Park



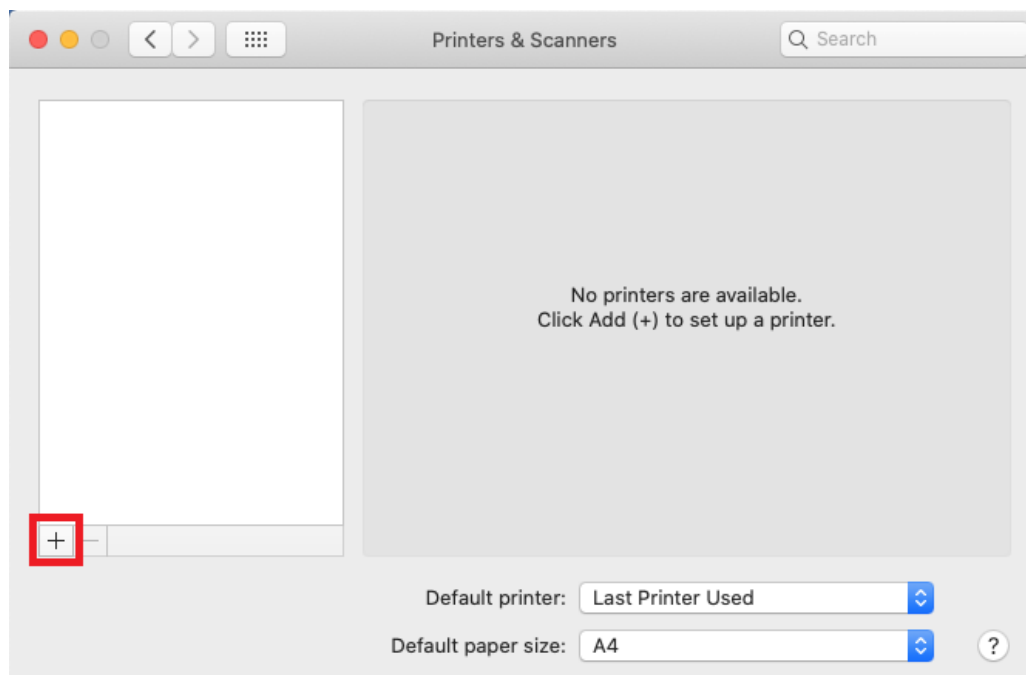
Complete the installation.

2. Select the Nuvia printer driver for printing.

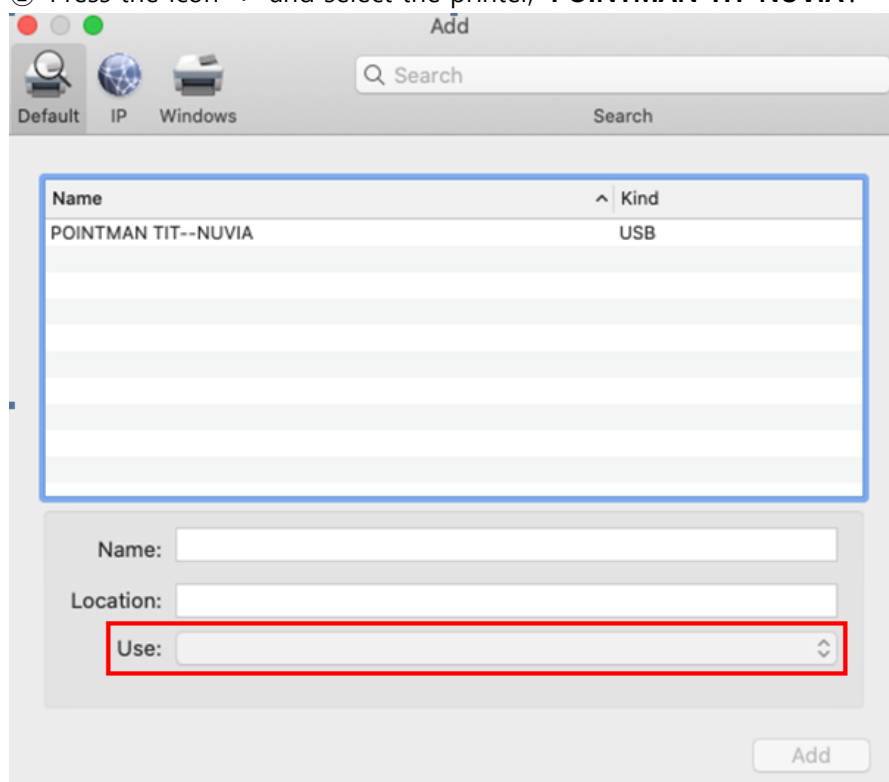
① Go to the System Preference and Printers & Scanners



POINTMAN	MACOS Printer Install Guide				
TITLE	MACOS Printer Install Guide	Rev 1,0,0,2	Date	2023-07-01	
MODEL	Nuvia	Department	SW Team	Author	SJ, Park

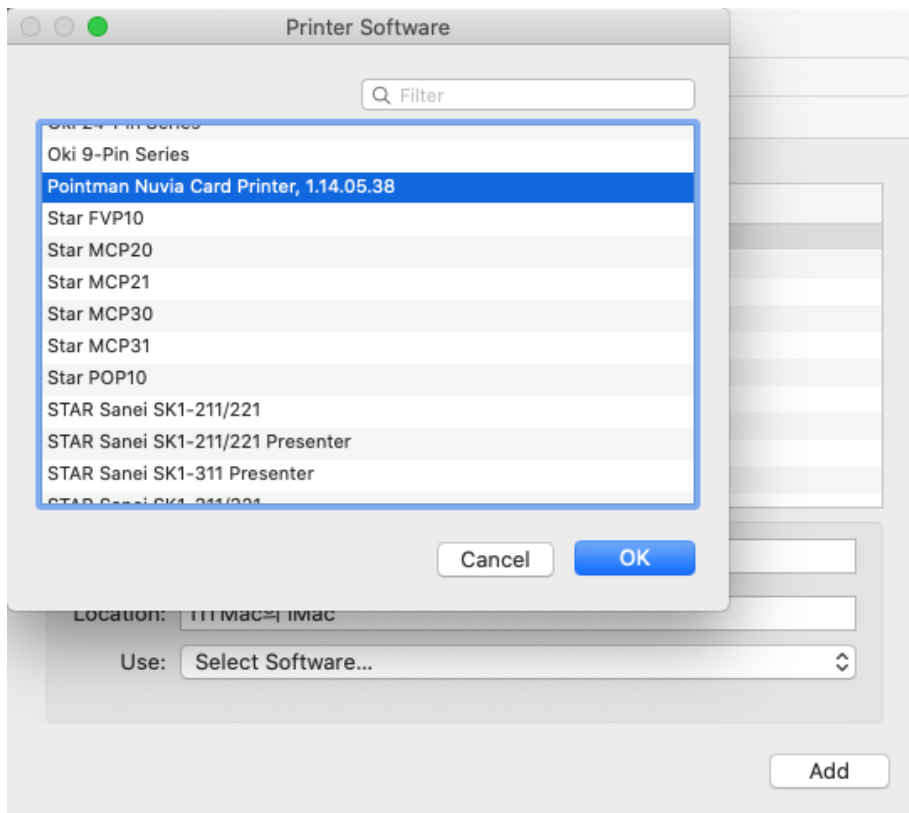


② Press the icon '+' and select the printer, '**POINTMAN TIT-NUVIA**'.

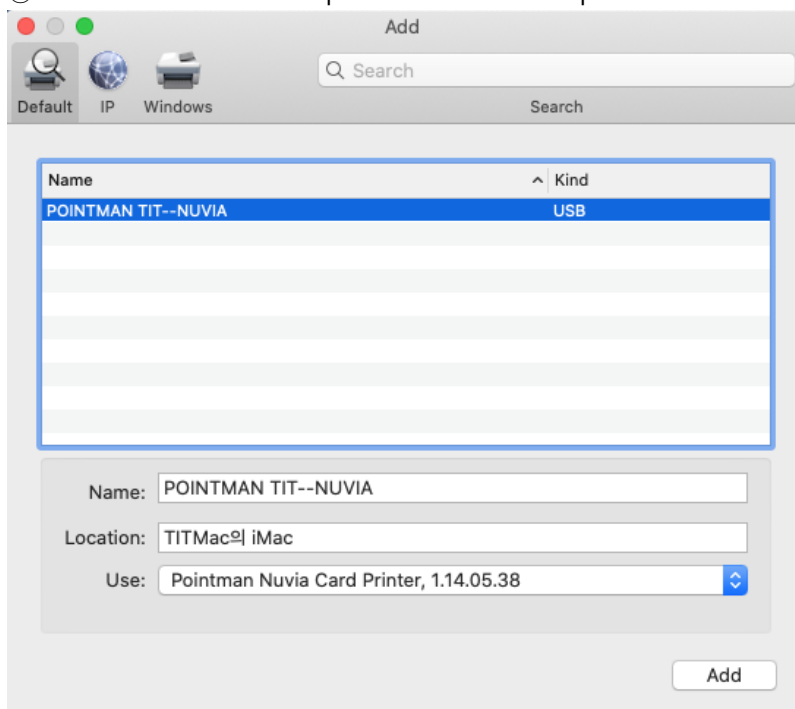


③ Select the 'Use' part and find the '**Pointman Nuvia Card Printer, 1.14.05.38**'

POINTMAN	MACOS Printer Install Guide				
TITLE	MACOS Printer Install Guide	Rev 1,0,0,2	Date	2023-07-01	
MODEL	Nuvia	Department	SW Team	Author	SJ, Park

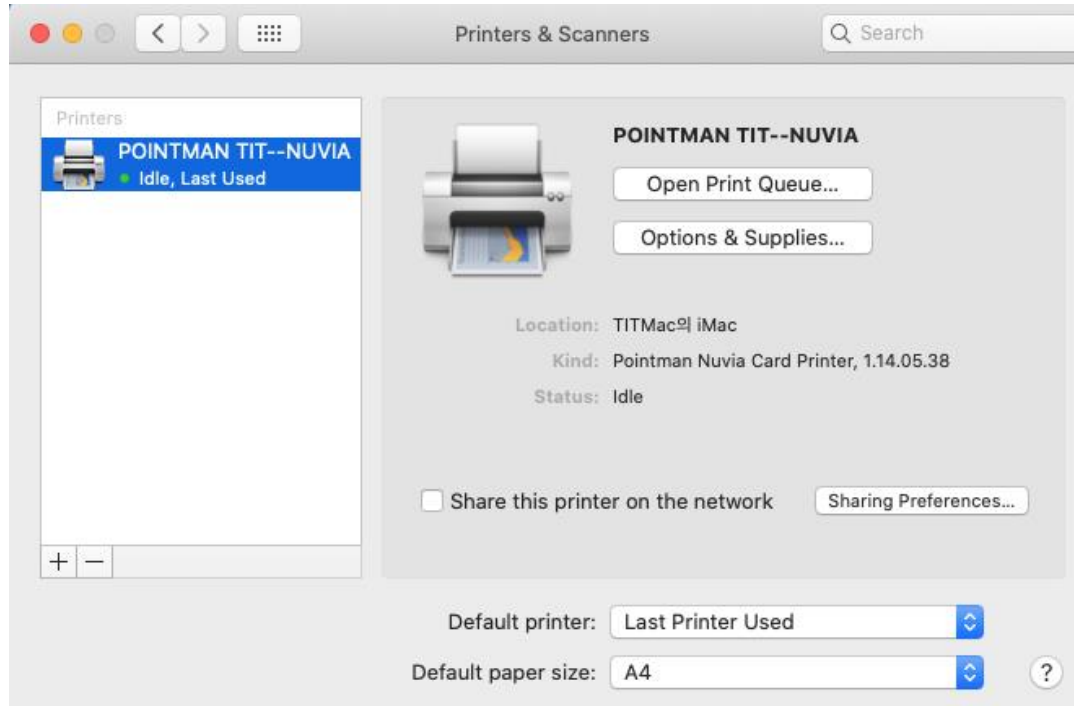


④ Confirm the selected options for the Nuvia printer. See below.



POINTMAN	MACOS Printer Install Guide				
TITLE	MACOS Printer Install Guide	Rev 1,0,0,2	Date	2023-07-01	
MODEL	Nuvia	Department	SW Team	Author	SJ, Park

⑤ Now the printer installation is succesful.

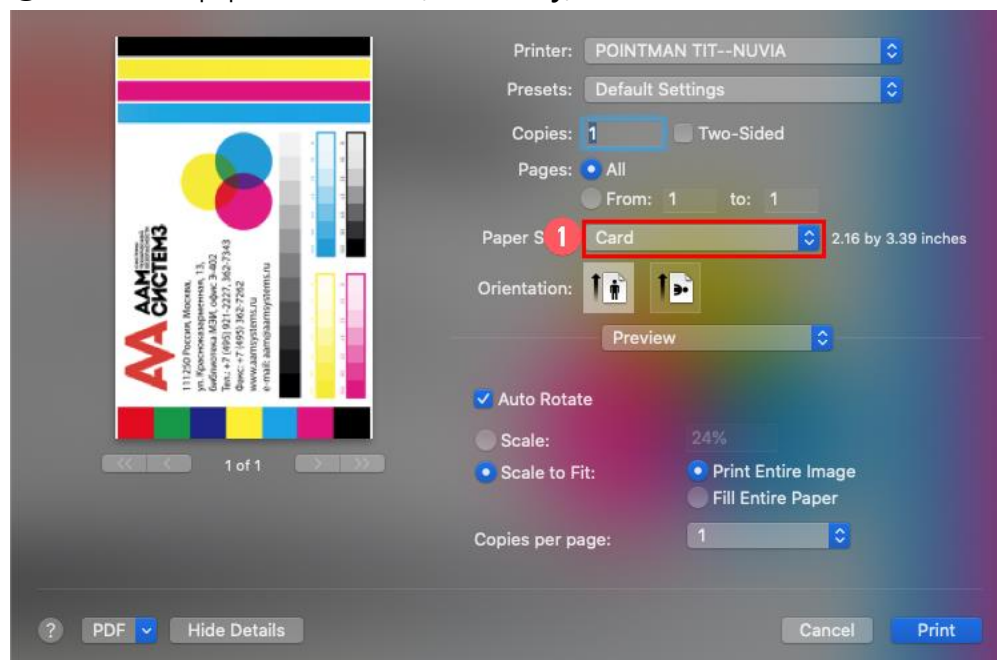


POINTMAN	MACOS Printer Install Guide				
TITLE	MACOS Printer Install Guide	Rev 1,0,0,2	Date	2023-07-01	
MODEL	Nuvia	Department	SW Team	Author	SJ, Park

3. How to print the image by options.

3.1. Catalina (10.15.x)

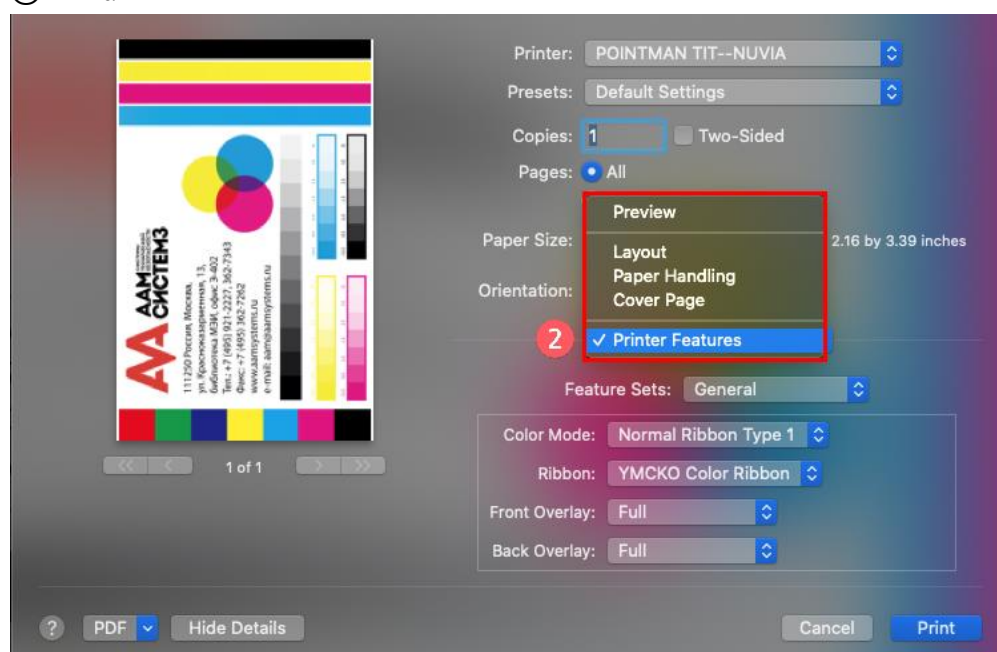
① Choose the paper size "Card" (**Mandatory**)



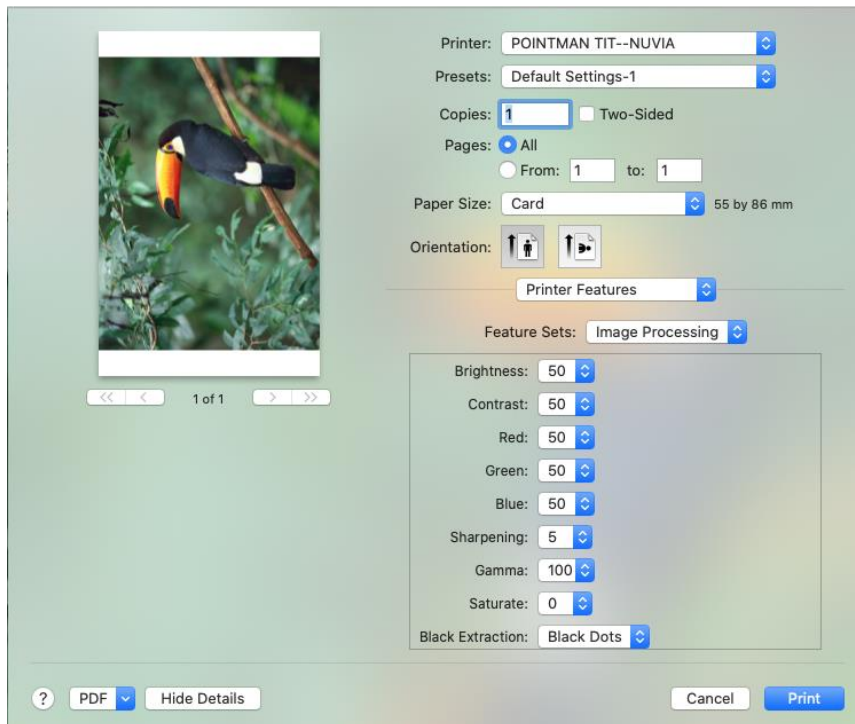
② Select the "Printer Features"

③ And **Feature Sets** part. Change the selection to the General ► **Image Processing**

④ Print.

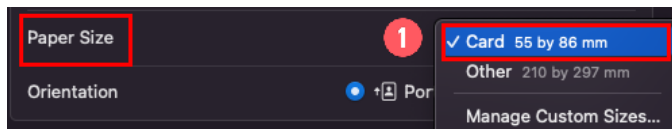


POINTMAN	MACOS Printer Install Guide				
TITLE	MACOS Printer Install Guide	Rev 1,0,0,2	Date	2023-07-01	
MODEL	Nuvia	Department	SW Team	Author	SJ, Park

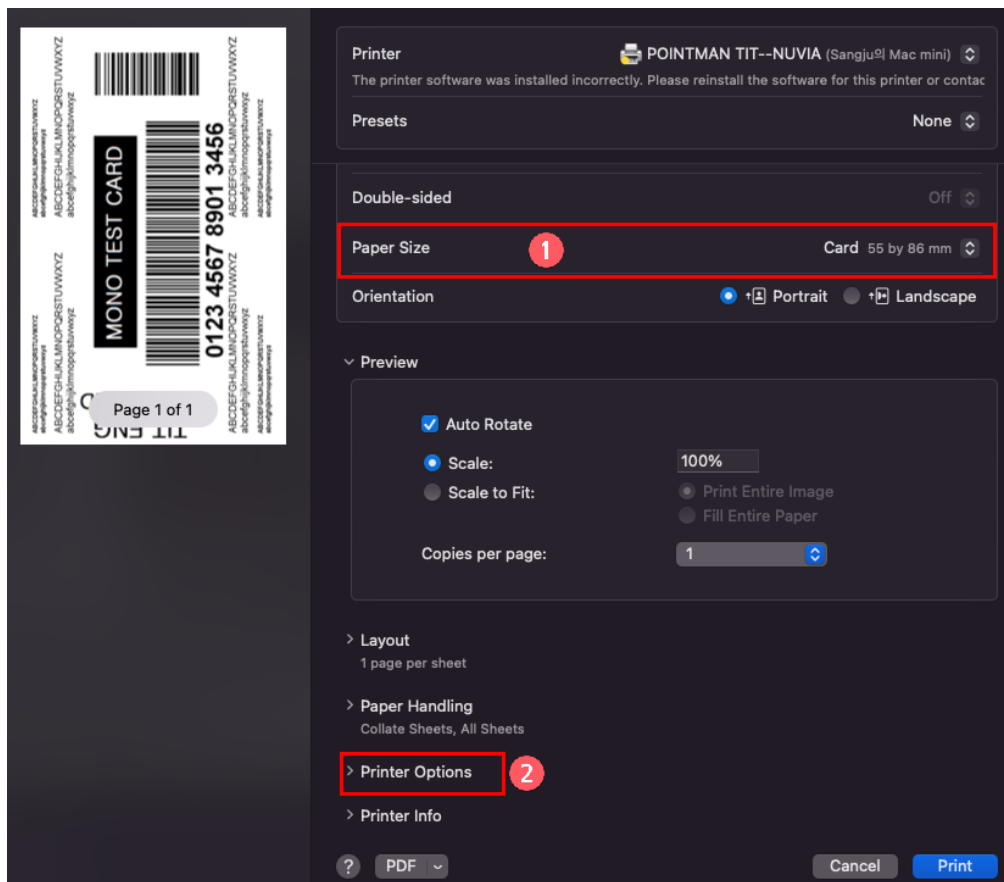


2. Ventura 13.2.1

① Select the paper size "Card 55 by 86 mm"



POINTMAN	MACOS Printer Install Guide				
TITLE	MACOS Printer Install Guide	Rev 1,0,0,2	Date	2023-07-01	
MODEL	Nuvia	Department	SW Team	Author	SJ, Park

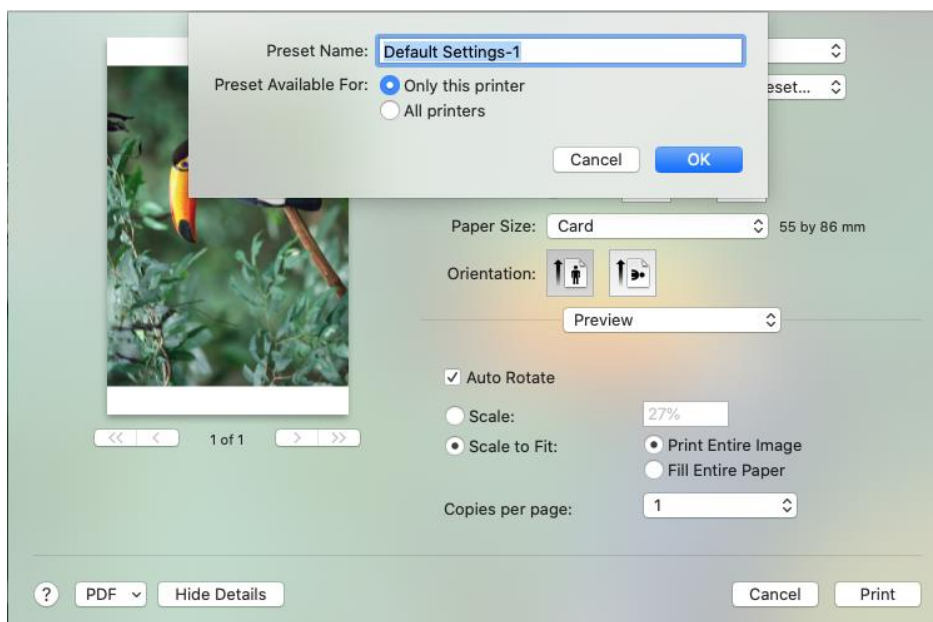
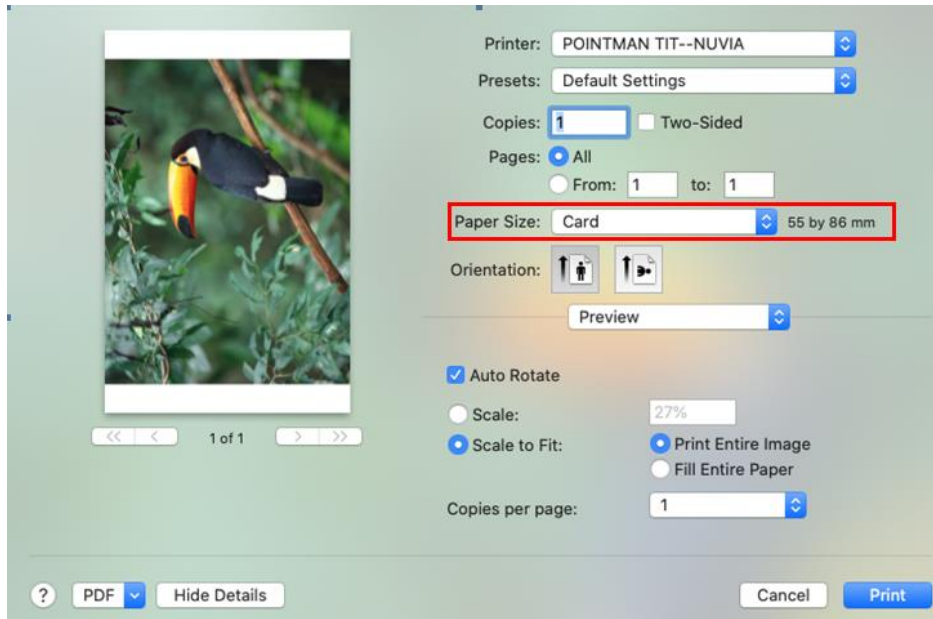


- ② select the "Printer Options" ► "Printer Features"
- ③ And Feature Sets part. Change the selection to the **Image Processing**
- ④ Print.

POINTMAN	MACOS Printer Install Guide				
TITLE	MACOS Printer Install Guide	Rev 1,0,0,2	Date	2023-07-01	
MODEL	Nuvia	Department	SW Team	Author	SJ, Park

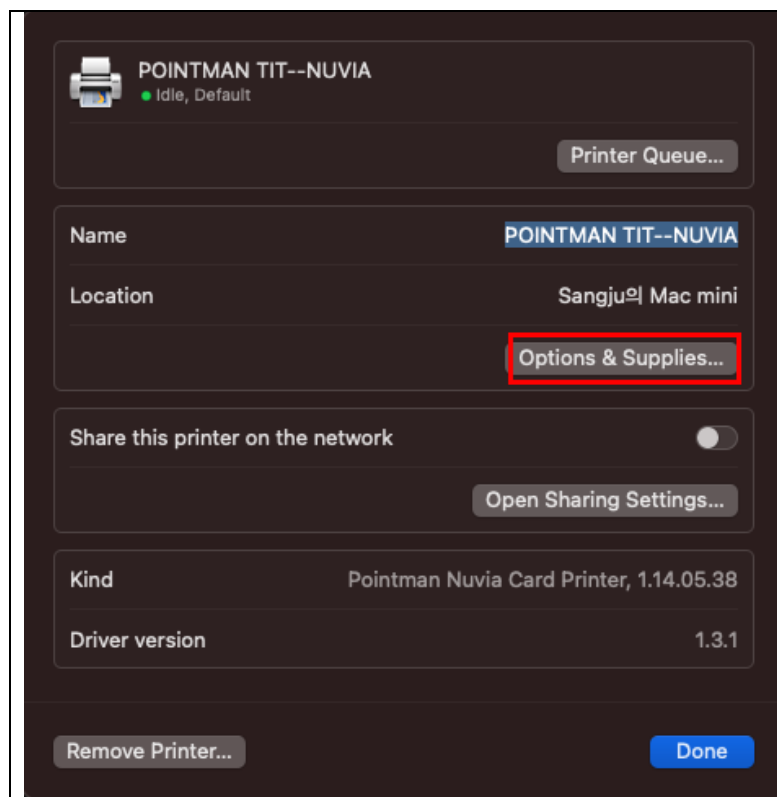
4. How the set the preset for the priter

- ① Start to print and see the window below.
- ② Select the paper size, '**Card**' and change the presets part for this printer.

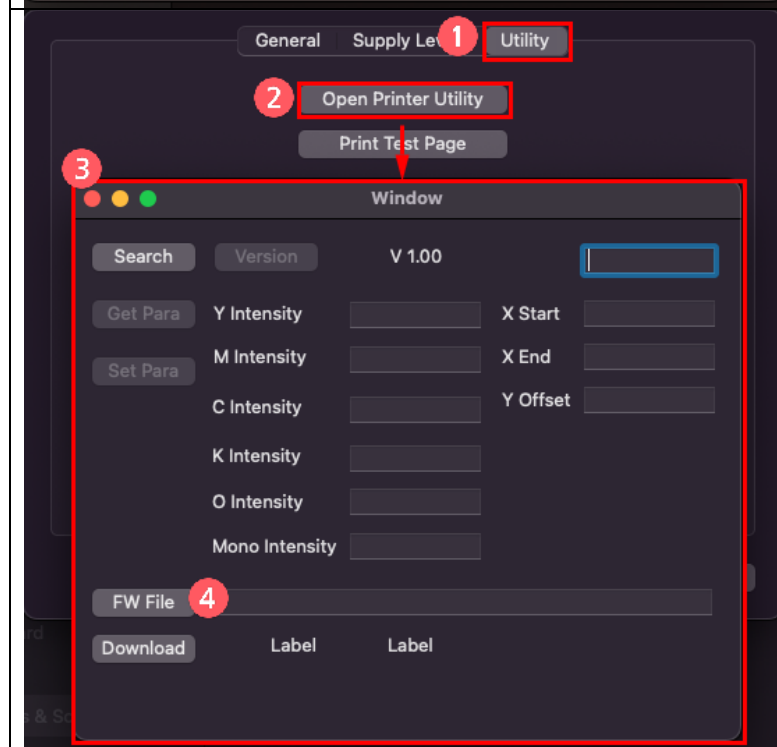


5. Config the printer options and download the firmware.

POINTMAN	MACOS Printer Install Guide				
TITLE	MACOS Printer Install Guide	Rev 1,0,0,2	Date	2023-07-01	
MODEL	Nuvia	Department	SW Team	Author	SJ, Park



1. Go to the printer properties
2. Push the "Options & Supplies..." button.



3. Go to the Utility tab. ①
4. Push the "Open Printer Utility" button. ②
5. See the New application about printer utility.
6. At first, push the "Search" button.
and next, push the "Version" button.
7. Select the F/W file using "FW File" button.
And next push the "Download" button.
And then downloading the F/W started.